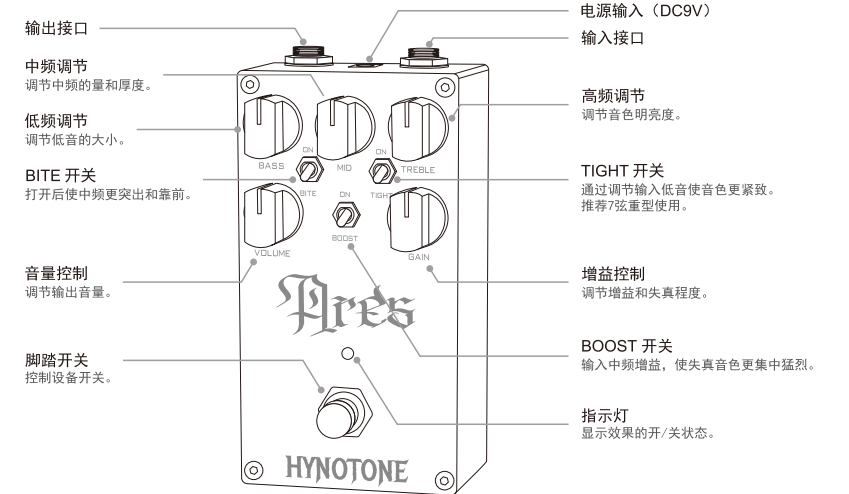


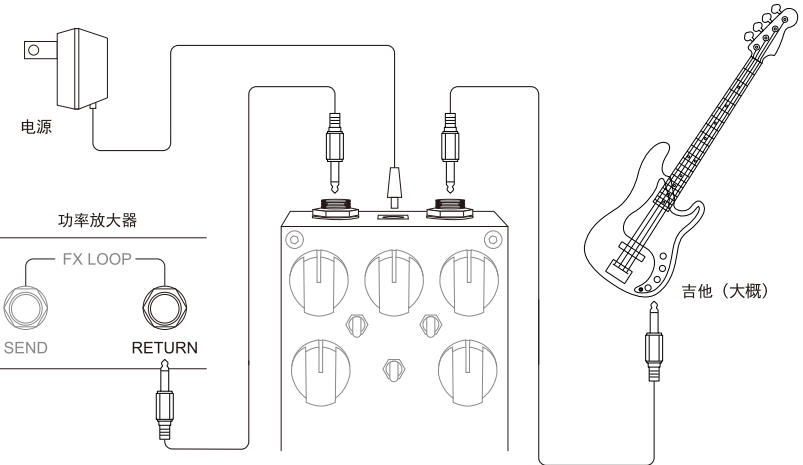
Fire

产品说明书

面板说明



连 接



注意事项

- 请使用正确的 9V 电源连接, 不使用时或雷雨天气请拔下电源。
- 为避免错误操作, 请在进行任何连接前调低音量并关闭所有设备电源。
- 不得将本机搁置在高温、潮湿的环境, 更不得淋雨或者受强烈冲击。
- 不得随意拆开机壳, 如需维修应请专业维修人员处理。
- 对因产品的故障而直接或间接引起的任何损失或损坏不予负责。
- 因产品改进, 规格及功能若有变动恕不另行通知。

参 数

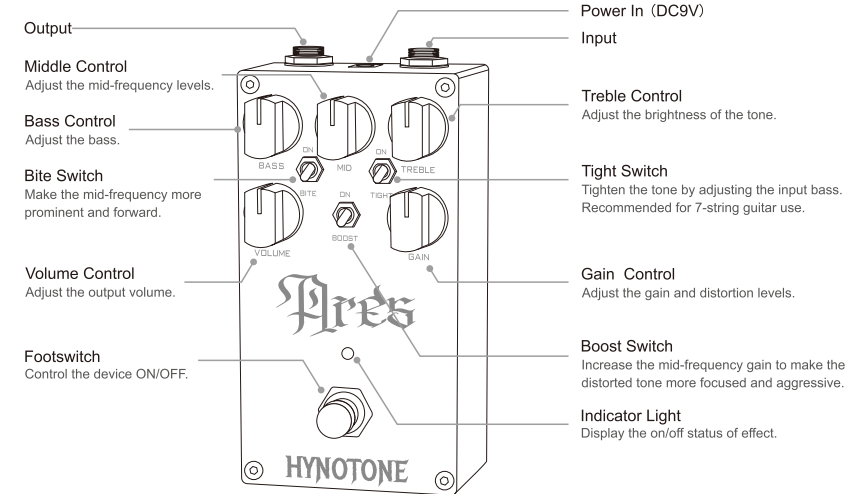
尺 寸	65*125*60 mm
重 量	315g
输入阻抗	1MΩ
输出阻抗	1kΩ
输入电源	DC 9V (内负外正) 范围 7-12Vdc
电流消耗	10mA 典型 100mA 最大

合格证
QC PASS

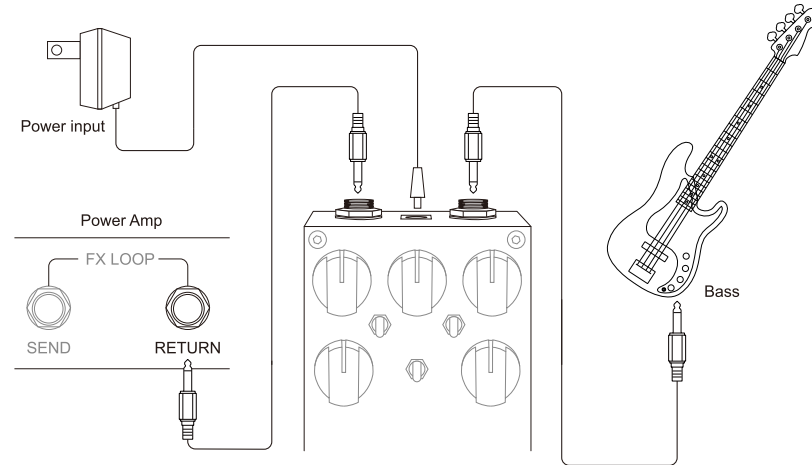


User Manual

Panel Descriptions



Connection



Precautions

- Please use a proper 9V power supply for connection, and unplug the power supply when not in use or during thunderstorms.
- To avoid incorrect operation, please lower the volume and turn off all devices before making any connections.
- Do not keep the unit in a hot, humid environment or hit the unit strongly.
- Opening the case instantly voids the warranty!
- Topping accepts no liability for any loss or damage arising directly or indirectly from the failure of Ares.
- For improvement purpose, specifications subject to changes without prior notice.

Specifications

Measured	65*125*60 mm
Weight	315g
Input impedance	1MΩ
Output impedance	1kΩ
Power input	center-negative 9V nominal, 7-12V range
Current draw	10mA typical, 100mA max